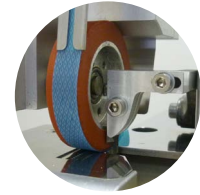


WELD & CUT MACHINE . NOSO MX 204



Machine for applying one sided or double sided adhesive tapes to the edge and trimming any excess of fabric. It is equipped with an electronic tape tensioner and make applications on both open and closed garments.



HEAT HAS NEVER BEEN SO GREEN
less consumption, better efficiency



MACHINE KEY FEATURES

- User-friendly overlock system
- Electronic tape tension regulation
- Can handle gathering
- Clean cut
- It can deal also with curves
- High speed
- Both open and closed garments
- Even heat distribution
- No scorched fabrics
- Top quality components
- Low and easy maintenance
- Tapes of different quality and widths
- Recommendable tape width: 6 mm-8mm 10 mm

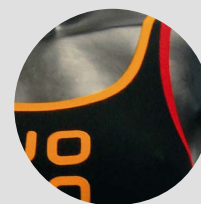
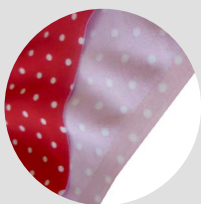
TECHNOLOGY



LW 001 . RAW-CUT EDGE

The tape is applied to the edge and any excess of fabric is trimmed with a perfect cut.

APPLICATIONS



FRAMISITALIA

 BONDING TECHNOLOGY

WELD & CUT MACHINE . NOSO MX 204

TECHNICAL IMPROVEMENT

- .increase adhesion
- .increase speed
- .increase production
- .reduce thermal stress of the machine
- .reduce thermal stress on the fabric
- .minimize electricity consumption
- .greater performance with less quantity of air improving also the comfort for the operator
- .standby mode



HEAT HAS NEVER BEEN SO GREEN
less consumption, better efficiency



BASE MACHINE DESCRIPTION

- .base machine with 1 heater
- .spot lamp
- .drawer
- .vertical roll support
- .tensioner metering device
- .silicone rubber wheel group 17 mm-35SH (soft)
- .20 mm nozzle
- .weld & cut device
- .protection screen
- .white table with beech borders 120x60x4
- .table support structure
- .pedals
- .16A 3 poles socket
- .tape guide 8x1 mm
- .tape guide 10x1 mm
- .screwdriver 2,5
- .manual

TECHNICAL INFO FOR INSTALLATION

Dimension and weight

h. 1100 x 550 x H.1550 mm - 80 Kg

Pneumatic connection - all connections on the left side

Fast junction diam 8 mm

Maximum air flow: 80 l/min - average consumption: 45 to 55 l/min

Input air pressure: 5.5 bar (0.55 MPa)

Air quality: **dry air** in accordance to DIN 8573-1 with dew point + 3° C not lubricated

Electric connection

Nominal voltage: 230 Vac

Nominal frequency: 50 Hz / 60 Hz

Nominal power requirements: 1400 W

THE LOWEST CONSUMPTION IN THE WORLD OF BONDING

Average consumption for standard applications:

Electricity consumption: 0.45 kw/h - CO₂ emission: 146 gr/h - Compressed air consumption: 45 to 55 l/min

The machines complies to technical rulings: Machinery Directive 2006/42/CE, Electromagnetic Compatibility CEE 2004/108/CE and CEI EN 60204-1:2006, Low Tension Directive 2006/95/CE, UNI EN 414:2002, UNI EN ISO 12100:2010, UNI EN ISO 13857:2008, UNI EN ISO 13850:2007, UNI EN ISO 11202:2007

FRAMISITALIA
ITALY · HONG KONG · USA